

# JEI Learning Center®



# SUMMER SMART START

**Personalized Learning. Targeted Skill Building.  
Stronger Foundation for September.**



## LITERACY

- Phonics & Reading Fluency
- Reading Comprehension
- Writing & Editing Skills
- Vocabulary, grammar, parts of speech, sentence structure
- Oral communication skills

## Math & Problem-Solving

- Conceptual understanding:  
Number sense (addition, subtraction, multiplication, division, decimals, fractions)
- Measurement/Geometry
  - Data management & Probability
  - Algebra
  - Challenging Word Problems that build Critical Thinking

## BRAIN SAFARI

Strengthens logical and analytical skills, and enhances creativity, and memory proficiency. This program provides a balanced approach to developing and enhancing overall cognitive ability.



### 3 Convenient Campuses

RH (Leslie & Elgin Mills): 905-237-8534  
North RH (Yonge & 19th): 905-737-5252  
Cathedraltown: 905-887-3922

## JEI Summer Programs

- » JEI English JK to Grade 4
- » JEI Reading & Writing Grade 4 to 8
- » JEI Math & Problem-Solving JK to Grade 8
- » Critical Thinking Brain Safari Grade 1 to 3

**Buy 4 classes, get 2 FREE!**



**6\* / 4 Math or English classes only \$209**

Make your own schedule!

Monday, Tuesday, Thursday, Friday  
3:15-4:00 / 4:15-5:00 / 5:15-6:00\*

**5:15 (limited spots at select campus)**

**Program starts July 6 to August 28**

CENTER CLOSED-NO CLASSES: Jul. 27-31 / Aug. 3-7 / Aug. 31-Sep. 4



## Program Highlights

- 45 minutes per class per subject
- 1:4 Instructor to Student Ratio
- Real-time quality feedback and step-by-step guidance from our JEI Instructors
- Customized Learning Program for each child
- Comprehensive Curriculum with Structure English & Math Workbooks
- Create positive study habits throughout the summer months

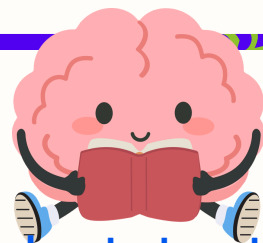




# JEI Learning Center<sup>®</sup>

## SUMMER SMART START

### How to Register



1. Complete your booking request online at [HERE](#)
2. Once you submit this form, our team will review your request and contact you to confirm your class schedule and availability.
3. Submit tuition payment to lock in your child's programming
4. You're all set to start your first class!



#### New Student One-time Registration Fee:

- \$100 (includes one subject assessment)
- \$125 (includes two subject assessments)

#### Returning Student Reassessment Fee:

- \$40.00 per child applies to students who have been inactive at JEI for more than 30 days at the time of registration.
- The single-class rate of \$60.00 per class applies to any modifications to the six-week program.

### Terms & Conditions

- Seats are secured with payment and are allocated on a first-come, first-served basis.
- 1 student per program package (package may not be shared with a sibling/friend).
- Classes must be scheduled in consecutive weeks or within the same month. Spots cannot be reserved for skipped weeks.
- The availability of make-up sessions is limited and is not guaranteed.
- All Summer Classes must be completed by August 28th, 2026 and may not be carried forward into September Programming.
- All Summer tuition is non-refundable and may not be converted into credits for future use.
- Method of payment via e-transfer or Visa/MC (3% credit card service fee applies per transaction)
- Valid only at JEI Richmond Hill, JEI North Richmond Hill & JEI Cathedraltown

### Multi-Campuses

 **1650 Elgin Mills Road East (Costco/Staples Plaza)**  
**905-237-8534**

 **11685 Yonge St. (North Yonge/beside Nissan Dealership)**  
**905-737-5252**

 **66 Cathedral High St. (Cathedraltown Center)**  
**905-887-3922**